

### FEATURES

- Customizable polycarbonate surface with 4/6/8/10 touch areas with RGB backlight and customizable icons through web application (<https://tmd.zennioapps.com>)
- Available colours, please refer to: <https://www.zennio.com/finishes>
- Supports KNX Data Secure
- Thermostat
- 2 analog/digital inputs
- Built-in temperature sensor
- Touch confirmation through acoustic feedback
- Proximity sensor
- Total data saving on KNX bus failure
- Integrated KNX BCU (TP1-256)
- Dimensions 119.1 x 79.6 x 37.2 mm
- Portrait or landscape flush mount on standard European, Italian, Australian and American mounting box
- Conformity with the CE, RCM directives (marks on the back side)

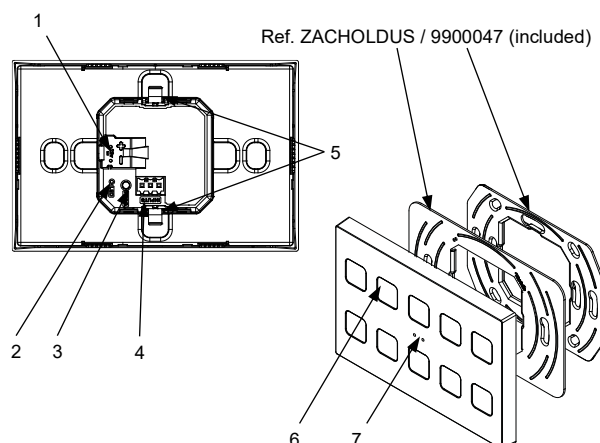


Figure 1: Tecla RGB XL 4/6/8/10

1. KNX connector	2. Programming LED	3. Programming button	4. Inputs connector
5. Fixing clips	6. Touch area	7. Proximity sensor	

Programming button: short press to set programming mode. If this button is held while plugging the device into the KNX bus, it enters the safe mode. In order to perform a KNX Secure factory reset, while the device is in safe mode, press the button for 10 seconds until the programming LED changes its state.

Programming LED: programming mode indicator (red). When the device enters the safe mode, it blinks (red) every half second. During the start-up (reset or after KNX bus failure) and if the device is not in safe mode, it emits a red flash.

### GENERAL SPECIFICATIONS

CONCEPT		DESCRIPTION	
Type of device		Electric operation control device	
KNX supply	Voltage (typical)	29 VDC SELV	
	Voltage range	21-31 VDC	
	Maximum consumption	Voltage	mA
		29 VDC (typical)	ZVITRXL10 (28.0) ZVITRXL8 (28.6) ZVITRXL6 (28.8) ZVITRXL4 (21.7)
		24 VDC <sup>1</sup>	ZVITRXL10 (30) ZVITRXL8 (30) ZVITRXL6 (30) ZVITRXL4 (25)
	Connection type		mW
External power supply		Typical TP1 bus connector for 0.8 mm Ø rigid cable	
Operation temperature		Not required	
Storage temperature		0 .. +55 °C	
Operation humidity		-20 .. +55 °C	
Storage humidity		5 .. 95%	
Complementary characteristics		5 .. 95%	
Protection class		Class B	
Operation type		III	
Device action type		Continuous operation	
Electrical stress period		Type 1	
Degree of protection		Long	
Installation		IP20, clean environment	
Minimum clearances		Flush mount on back box	
Response on KNX bus failure		Not required	
Response on KNX bus restart		Data saving according to parameterization	
Operation indicator		Data recovery according to parameterization	
Weight		The programming LED indicates programming mode (red). Backlighting of touch areas depending on their parameterization.	
Housing material		112 g	
		PC (front part) / PC+ABS (rear part) FR V0 halogen free	

<sup>1</sup> Maximum consumption in the worst-case scenario (KNX Fan-In model).

INPUTS SPECIFICATIONS AND CONNECTIONS	
CONCEPT	DESCRIPTION
Number of inputs	2
Inputs per common	2
Operation voltage	3.3 VDC in the common
Operation current	1 mA @ 3.3 VDC (per input)
Switching type	Dry voltage contacts between input and common
Connection method	Pluggable screw terminal block (0.2 Nm max.)
Cable cross-section	0.2-1.5 mm <sup>2</sup> (IEC) / 28-14 AWG (UL)
Maximum cable length	30 m
NTC accuracy (@ 25 °C) <sup>2</sup>	±0.5 °C
Temperature resolution	0.1 °C
Maximum response time	10 ms

<sup>2</sup> For Zennio temperature probes.

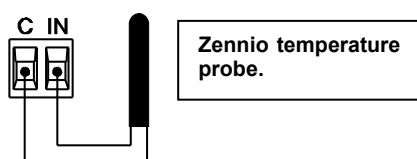
INTERNAL TEMPERATURE SENSOR SPECIFICATIONS	
CONCEPT	DESCRIPTION
Measuring range	-30 .. +90 °C
Temperature resolution	0.1 °C
NTC accuracy (@ 25 °C) <sup>3</sup>	±0.5 °C

<sup>3</sup> The accuracy of the NTC sensor may be reduced in case of keeping the backlight status LEDs permanently on.

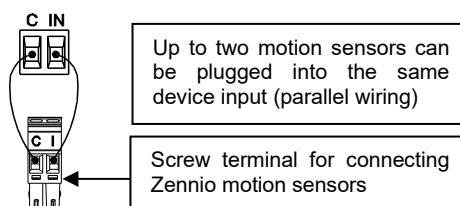
## INPUTS CONNECTION

Any combination of the following accessories is allowed in the inputs:

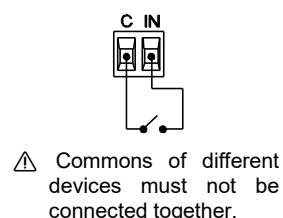
### Temperature Probe\*



### Motion Sensor



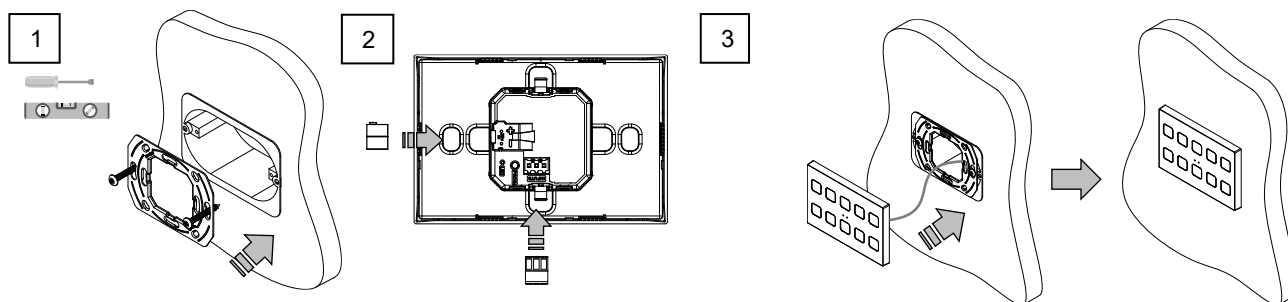
### Switch/Sensor/Push button



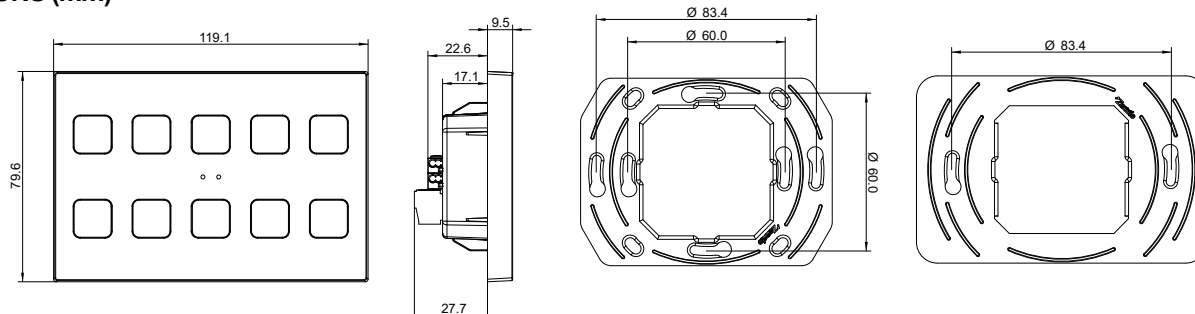
\* Zennio temperature probe or any NTC with known resistance values at three points in the range [-55, 150 °C].

## INSTALLATION INSTRUCTIONS

1. Fix the metal plate into a square or round back box by using the screws from the box, checking that it is levelled.
2. Connect the KNX bus and the inputs terminal to the back of the device.
3. Fit the device into its final position and check that the strength of the clips is enough to fix the device.



## DIMENSIONS (mm)



## SAFETY INSTRUCTIONS AND ADDITIONAL NOTES

- Installation should only be performed by qualified professionals according to the laws and regulations applicable in each country.
- Do not connect the mains voltage nor any other external voltage to any point of the KNX bus; it would represent a risk for the entire KNX system. The facility must have enough insulation between the mains (or auxiliary) voltage and the KNX bus or the wires of other accessories, in case of being installed.
- Keep the device away from water (condensation over the device included) and do not cover it with clothes, paper or any other material while in use.
- In order to improve the lifespan of the LED indicators, parameterising constant lighting is not recommended.
- The WEEE logo means that this device contains electronic parts and it must be properly disposed of by following the instructions at <https://www.zennio.com/en/legal/weee-regulation>.
- This device contains software subject to specific licences. For details, please refer to <https://zennio.com/licenses>.